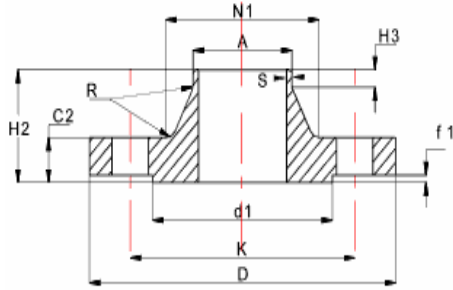


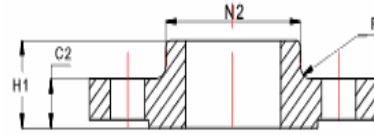
# 25 BAR

Acc. to BS EN 1092-1

## WELD NECK FLANGES SLIP-ON FLANGES



TYPE 11



TYPE 12

NPS	D	K	Size	No.	C2	H1	H2	H3	R	A	N1	N2	d1	f1	S
15	95	65	M12	4	14	20	35	6	4	21.3	32	35	45	2	2.0
20	105	75	M12	4	14	24	38	6	4	26.9	39	45	58	2	2.3
25	115	85	M12	4	16	24	38	6	4	33.7	46	52	68	2	2.6
32	140	100	M16	4	16	26	40	6	6	42.4	56	60	78	2	2.6
40	150	110	M16	4	16	26	42	7	6	48.3	64	70	88	2	2.6
50	165	125	M16	4	20	34	48	8	6	60.3	75	84	102	2	2.9
65	185	145	M16	8	22	38	52	10	6	76.1	90	104	122	2	2.9
80	200	160	M16	8	24	40	58	12	8	88.9	105	118	138	2	3.2
100	235	190	M20	8	24	44	65	12	8	114.3	134	145	162	2	3.6
125	270	220	M24	8	26	48	68	12	10	139.7	162	170	188	2	4.2
150	300	250	M24	8	28	52	75	12	10	168.3	192	200	218	2	4.5
200	360	310	M24	12	30	52	80	16	10	219.1	244	256	278	2	6.3
250	425	370	M27	12	32	60	88	18	12	273.0	298	310	335	2	7.1
300	485	430	M27	16	34	67	92	18	12	323.9	352	364	395	2	8.0
350	555	490	M30	16	38	72	100	20	12	355.6	398	418	450	2	8.0
400	620	550	M33	16	40	78	110	20	12	406.4	452	472	505	2	8.8
450	670	600	M33	20	46	84	110	20	12	457.0	500	520	555	2	8.8
500	730	660	M33	20	48	90	125	20	12	508.0	558	580	615	2	10.0
600	845	770	M36	20	58	100	125	20	12	610.0	660	684	720	2	11.0
700	960	875	M39	24	46	-	125	20	12	711.0	760	-	820	2	12.5
800	1085	990	M45	24	50	-	135	22	12	813.0	864	-	930	2	14.2
900	1185	1090	M45	28	54	-	145	24	12	914.0	968	-	1030	2	16.0
1000	1320	1210	M52	28	58	-	155	24	16	1016.0	1070	-	1140	2	17.5

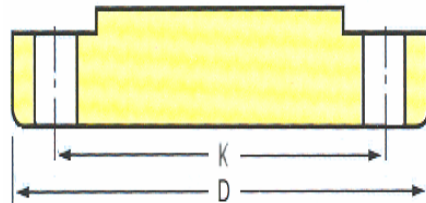
\* All Dimensions in mm.

- DN Nominal Size
- K Pitch Circle Diameter
- SIZE Size of Bolts
- No Number of Holes
- C2 Thickness of Weld Neck & Slip-on Flange
- H1 Length of Slip-on Flange
- H2 Length of Weld Neck Flange
- H3 Length of Neck
- R Corner Radius
- A Outside Diameter of Neck
- N1 Diameter of Weld Neck
- N2 Diameter of Slip-on Flange

# 25 BAR

Acc. to BS EN 1092-1

## BLIND FLANGES



TYPE 05

NPS	D	K	Size	No.	C4	H1	R
15	95	65	M12	4	14	20	4
20	105	75	M12	4	14	24	4
25	115	85	M12	4	16	24	4
32	140	100	M16	4	16	26	6
40	150	110	M16	4	16	26	6
50	165	125	M16	4	20	34	6
65	185	145	M16	8	22	38	6
80	200	160	M16	8	24	40	8
100	235	190	M20	8	24	44	8
125	270	220	M24	8	26	48	10
150	300	250	M24	8	28	52	10
200	360	310	M24	12	30	52	10
250	425	370	M27	12	32	60	12
300	485	430	M27	16	34	67	12
350	555	490	M30	16	38	72	12
400	620	550	M33	16	40	78	12
450	670	600	M33	20	46	84	12
500	730	660	M33	20	48	90	12
600	845	770	M36	20	58	100	12
700	960	875	M39	24	-	-	12
800	1085	990	M45	24	-	-	12
900	1158	1090	M45	28	-	-	12
1000	1320	1210	M52	28	-	-	16

\* All Dimensions in mm.

DN Nominal Size  
 K Pitch Circle Diameter  
 SIZE Size of Bolts  
 No Number of Holes  
 C4 Thickness of Flange  
 H1 Length of Flange  
 R Corner Radius