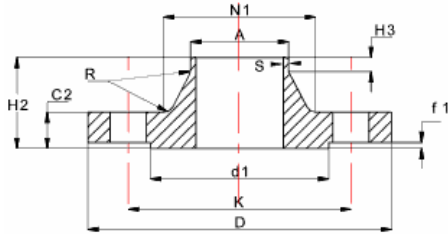


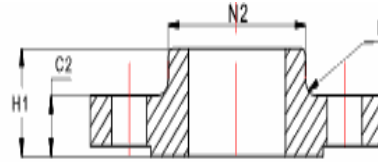
16 BAR

Acc. to BS EN 1092-1

WELD NECK FLANGES SLIP-ON FLANGES



TYPE 11



TYPE 12

NPS	D	K	Size	No.	C2	H1	H2	H3	R	A	N1	N2	d1	f1	S
15	95	65	M12	4	14	20	35	6	4	21.3	32	35	45	2	2.0
20	105	75	M12	4	14	24	38	6	4	26.9	39	45	58	2	2.3
25	115	85	M12	4	16	24	38	6	4	33.7	46	52	68	2	2.6
32	140	100	M16	4	16	26	40	6	6	42.4	56	60	78	2	2.6
40	150	110	M16	4	16	26	42	7	6	48.3	64	70	88	2	2.6
50	165	125	M16	4	18	28	45	8	6	60.3	75	84	102	2	2.9
65	185	145	M16	8**	18	32	45	10	6	76.1	90	104	122	2	2.9
80	200	160	M16	8	20	34	50	10	8	88.9	105	118	138	2	3.2
100	220	180	M16	8	20	40	52	12	8	114.3	131	140	158	2	3.6
125	250	210	M16	8	22	44	55	12	8	139.7	156	168	188	2	4.0
150	285	240	M20	8	22	44	55	12	10	168.3	192	195	212	2	4.5
200	340	295	M20	12	24	44	62	16	10	219.1	235	246	268	2	5.6
250	405	355	M24	12	26	46	70	16	12	273	292	298	320	2	6.3
300	460	410	M24	12	28	46	78	16	12	323.9	344	350	378	2	7.1
350	520	470	M24	16	30	57	82	16	12	355.6	390	400	438	2	8.0
400	580	525	M27	16	32	63	85	16	12	406.4	445	456	490	2	8.0
450	640	585	M27	20	40	68	87	16	12	457.0	490	502	550	2	8.0
500	715	650	M30	20	44	73	90	16	12	508.0	548	559	610	2	8.0
600	840	770	M33	20	54	83	95	18	12	610.0	652	658	725	2	8.8
700	910	840	M33	24	36	83	100	18	12	711.0	755	760	795	2	8.8
800	1025	950	M36	24	38	90	105	20	12	813.0	855	864	900	2	10.0
900	1125	1050	M36	28	40	94	110	20	12	914.0	955	968	1000	2	10.0
1000	1255	1170	M39	28	42	100	120	22	16	1016.0	1058	1072	1115	2	10.0

* All Dimensions in mm.

** Subject to agreement between the Manufacturer and the Purchaser 4 holes can be used for PN16, DN65 Steel Flanges

DN	Nominal Size
K	Pitch Circle Diameter
SIZE	Size of Bolts
No	Number of Holes
C2	Thickness of Weld Neck & Slip-on Flange
H1	Length of Slip-on Flange
H2	Length of Weld Neck Flange
H3	Length of Neck
R	Corner Radius
A	Outside Diameter of Neck
N1	Diameter of Weld Neck
N2	Diameter of Slip-on Flange