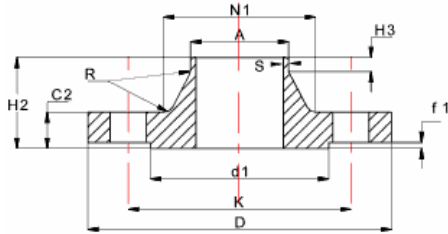


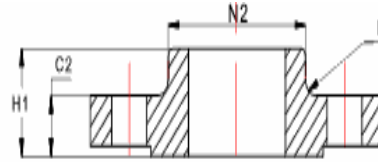
# 16 BAR

Acc. to BS EN 1092-1

## WELD NECK FLANGES SLIP-ON FLANGES



TYPE 11



TYPE 12

NPS	D	K	Size	No.	C2	H1	H2	H3	R	A	N1	N2	d1	f1	S
15	95	65	M12	4	14	20	35	6	4	21.3	32	35	45	2	2.0
20	105	75	M12	4	14	24	38	6	4	26.9	39	45	58	2	2.3
25	115	85	M12	4	16	24	38	6	4	33.7	46	52	68	2	2.6
32	140	100	M16	4	16	26	40	6	6	42.4	56	60	78	2	2.6
40	150	110	M16	4	16	26	42	7	6	48.3	64	70	88	2	2.6
50	165	125	M16	4	18	28	45	8	6	60.3	75	84	102	2	2.9
65	185	145	M16	8**	18	32	45	10	6	76.1	90	104	122	2	2.9
80	200	160	M16	8	20	34	50	10	8	88.9	105	118	138	2	3.2
100	220	180	M16	8	20	40	52	12	8	114.3	131	140	158	2	3.6
125	250	210	M16	8	22	44	55	12	8	139.7	156	168	188	2	4.0
150	285	240	M20	8	22	44	55	12	10	168.3	192	195	212	2	4.5
200	340	295	M20	12	24	44	62	16	10	219.1	235	246	268	2	5.6
250	405	355	M24	12	26	46	70	16	12	273	292	298	320	2	6.3
300	460	410	M24	12	28	46	78	16	12	323.9	344	350	378	2	7.1
350	520	470	M24	16	30	57	82	16	12	355.6	390	400	438	2	8.0
400	580	525	M27	16	32	63	85	16	12	406.4	445	456	490	2	8.0
450	640	585	M27	20	40	68	87	16	12	457.0	490	502	550	2	8.0
500	715	650	M30	20	44	73	90	16	12	508.0	548	559	610	2	8.0
600	840	770	M33	20	54	83	95	18	12	610.0	652	658	725	2	8.8
700	910	840	M33	24	36	83	100	18	12	711.0	755	760	795	2	8.8
800	1025	950	M36	24	38	90	105	20	12	813.0	855	864	900	2	10.0
900	1125	1050	M36	28	40	94	110	20	12	914.0	955	968	1000	2	10.0
1000	1255	1170	M39	28	42	100	120	22	16	1016.0	1058	1072	1115	2	10.0

\* All Dimensions in mm.

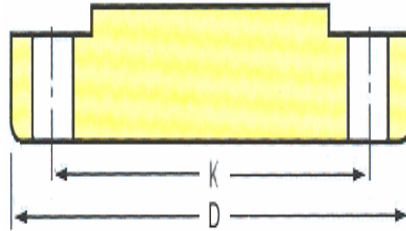
\*\* Subject to agreement between the Manufacturer and the Purchaser 4 holes can be used for PN16, DN65 Steel Flanges

DN	Nominal Size
K	Pitch Circle Diameter
SIZE	Size of Bolts
No	Number of Holes
C2	Thickness of Weld Neck & Slip-on Flange
H1	Length of Slip-on Flange
H2	Length of Weld Neck Flange
H3	Length of Neck
R	Corner Radius
A	Outside Diameter of Neck
N1	Diameter of Weld Neck
N2	Diameter of Slip-on Flange

# 16 BAR

Acc. to BS EN 1092-1

## BLIND FLANGES



TYPE 05

NPS	D	K	Size	No.	C4	H1	R
15	95	65	M12	4	14	20	4
20	105	75	M12	4	14	24	4
25	115	85	M12	4	16	24	4
32	140	100	M16	4	16	26	6
40	150	110	M16	4	16	26	6
50	165	125	M16	4	18	28	5
65	185	145	M16	8**	18	32	6
80	200	160	M16	8	20	34	6
100	220	180	M16	8	20	40	8
125	250	210	M16	8	22	44	8
150	285	240	M20	8	22	44	10
200	340	295	M20	12	24	44	10
250	405	355	M24	12	26	46	12
300	460	410	M24	12	28	46	12
350	520	470	M24	16	30	57	12
400	580	525	M27	16	32	63	12
450	640	585	M27	20	40	68	12
500	715	650	M30	20	44	73	12
600	840	770	M33	20	54	83	12
700	910	840	M33	24	48	83	12
800	1025	950	M36	24	52	90	12
900	1125	1050	M36	28	58	94	12
1000	1255	1170	M39	28	64	100	16

\* All Dimensions in mm.

\*\* Subject to agreement between the Manufacturer and the Purchaser 4 holes can be used for PN16, DN65 Steel Flanges

DN Nominal Size  
 K Pitch Circle Diameter  
 SIZE Size of Bolts  
 No Number of Holes  
 C4 Thickness of Flange  
 H1 Length of Flange  
 R Corner Radius